



WARSHIP-AIS



MILITARY

➔ Information Superiority

Offshore Systems, a pioneer of Electronic Chart Display and Information Systems (ECDIS), is a market leader in marine navigation. For over two decades, Offshore Systems has provided a history of safe navigation that has resulted in increased operational capability for fleets worldwide.

Warship-AIS (W-AIS) builds on the core capability of our **Electronic Chart Precise Integrated Navigation System (ECPINS®) Warship (W)**, an International Maritime Organization (IMO) Approved ECDIS that meets the NATO WECDIS STANAG 4564. W-AIS is designed to further improve the situational awareness provided by ECPINS through the addition of IMO compliant AIS.

In addition, the 'Warship' functionality provides the military or other government department users the ability to manipulate data through database analysis, enhance picture clarity with the use of MIL STD 2525B Symbology, create contacts and pass or share information between other W-AIS users.

W-AIS users benefit from the advanced features of Offshore Systems' extensive experience in warship navigation. As a scalable solution, W-AIS provides a huge increase in capability across a wide range of vessels.

Offshore Systems has over 25 years experience delivering navigational and enhanced situational awareness products to over eight navies.



W-AIS CONTACT QUERY AND IMAGE

KEY FEATURES & BENEFITS

Compliance

- IMO Approved ECDIS
- NATO WECDIS STANAG 4564
- US Navy ECDIS-N
- Incorporates IMO level AIS functionality and enhances it for military use

User Friendly

- Built in Software Minimum Keyboard Display (MKD)

Enhanced AIS Functionality

- User defined automatic de-cluttering
- Blue Force Tracking
- Spoofing/Deception

- Virtual Contacts
- 'Hot Key' silent mode

Interface with Shipping Databases

- User defined
- Commercially available

Comprehensive Sensor Interfacing

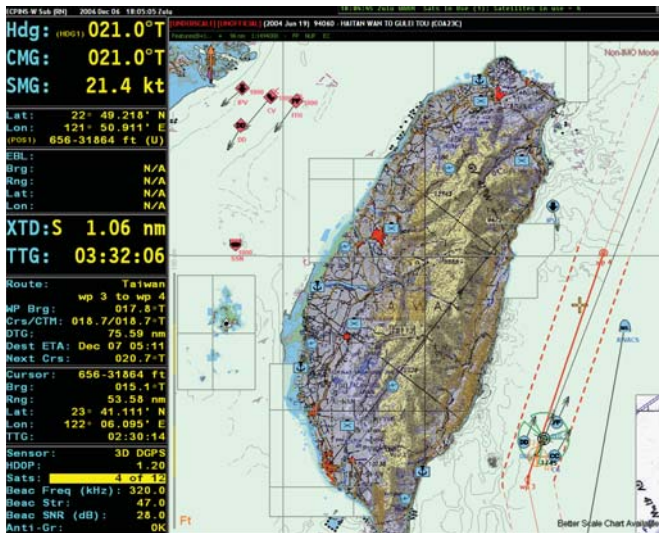
- DGPS, GPS, INS, ARPA Radar, Gyro/Compass, AIS, Depth Sounder, Speed Log

Fully Scalable

- Major Warships
- Minor Warships
- Submarines



ADVANCED NAVIGATION FEATURES



ECPINS® W Advanced Information Display showing multiple chart formats, MIL STD 2525B Symbols and user defined constructs.

DATA CONNECTION UNIT



- Sensors include (when available):

Date and time (UTC), Ship's position (DGPS/GPS), Heading (Gyro Compass), Speed (Speed Log), Depth under keel, wind, speed and direction, ARPA Radar Tracks, AIS (Automatic Identification System)

OPERATOR CONTROL PANEL & MONITOR

- The operator's primary means of using W-AIS
- Keyboard has 12 function keys assigned to key tasks and an adjustable backlight to facilitate operation in the dark
- 19" Monitor



TECHNICAL SPECIFICATIONS

AIS TRANSPONDER SYSTEM

- Broadcast of Dynamic, Static, Voyage Related information and Short Safety Related Data
- Standardized interface for connection to ship sensors e.g. GNSS, Gyro, Turn indicator, ECDIS, ECS, ARPA, Radar and Speed Log
- High resolution 6" graphic day and night display of up to 500 targets; shows vessels by bearing, range, name and call sign; messaging display for generation and presentation of safety related text messages; mandatory pilot plug is integrated in to the display to reduce installation cost
- Future upgrades possible without hardware changes using fully integrated DSP solution
- Internal 12 channel backup GPS ready to upgrade with DGPS, WAAS and EGNOS capability



PROCESSOR

- Marine Grade Pentium IV running Windows XP
- Supplied with 80GB Hard Drive
- Certified to IEC 60945 standards



SERIAL EXPANSION UNIT (SEU)

- The optically isolated serial expansion unit (O-SEU) connects the serial connectors of up to 8 ship's sensors to the W-AIS via the TCP/IP network. The unit is mounted in a 19-inch rack



ABOUT OFFSHORE SYSTEMS LTD.

Offshore Systems is a leading provider of marine electronics solutions. The company offers broad and versatile product lines including electronic chart systems for navigation and situational awareness, voyage data recorders and system components for bridge electronics.

Over the years, defence and commercial customers have relied on Offshore Systems for its extensive experience and expertise in bridge and sensor integration with real-time display of electronic charts.

WORLDWIDE SUPPORT & SERVICE AND INSTALLATION NETWORK

Offshore Systems is dedicated to providing customers with best in class customer support, service and installation. Our 24/7 support line provides customers with the peace of mind that an Offshore Systems technician stands ready to support their queries.

We have a qualified team of professionals to assist with service, installations, required annual surveys and re-certifications.

Our worldwide network of Offshore Systems personnel and leading partners are available to service customers from any location in the world.



Offshore Systems Ltd.
an OSI Geospatial company

#400-4585 Canada Way
Burnaby, BC
Canada V5G 4L6

T: +1 778 373 4600
F: +1 778 373 0027
Toll Free: 1 877 4ECPINS
(For North America only)

Visit us: www.osigeospatial.com/offshoresystems
Email: sales@osigeospatial.com